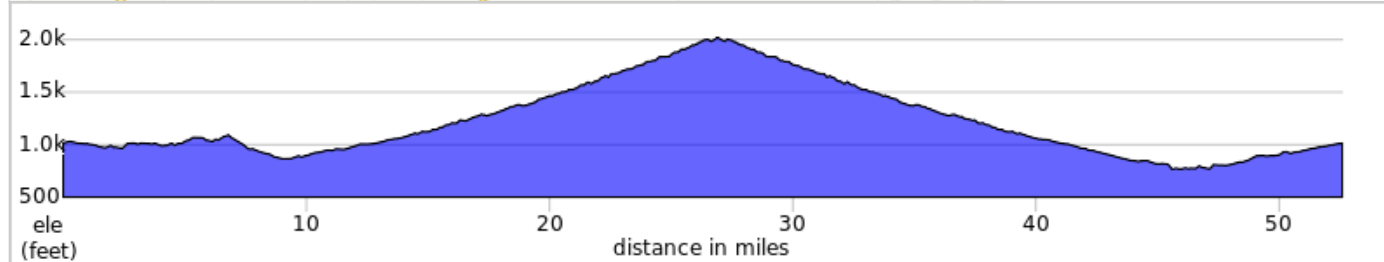
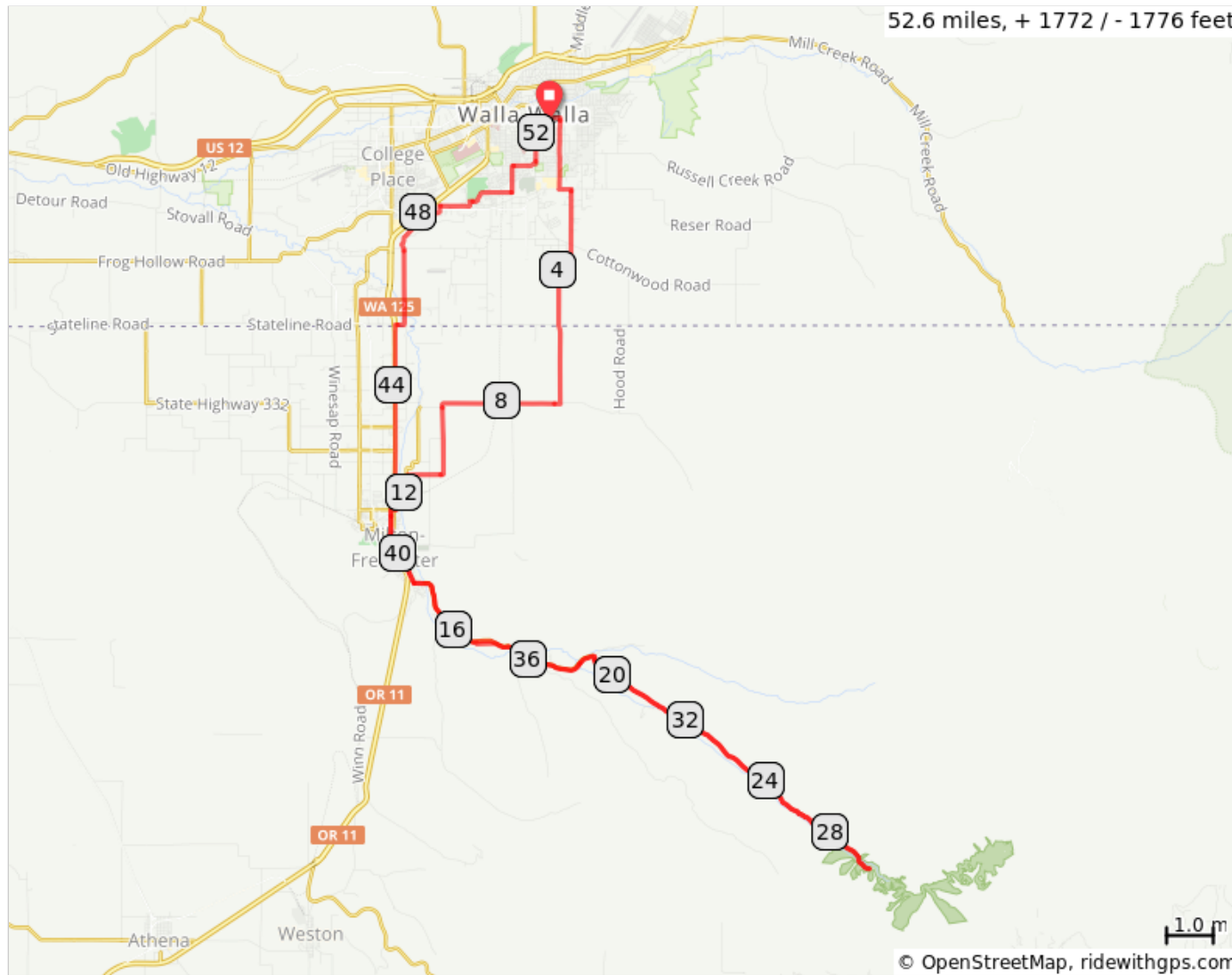


Pioneer Park - Harris Park - Pioneer Park

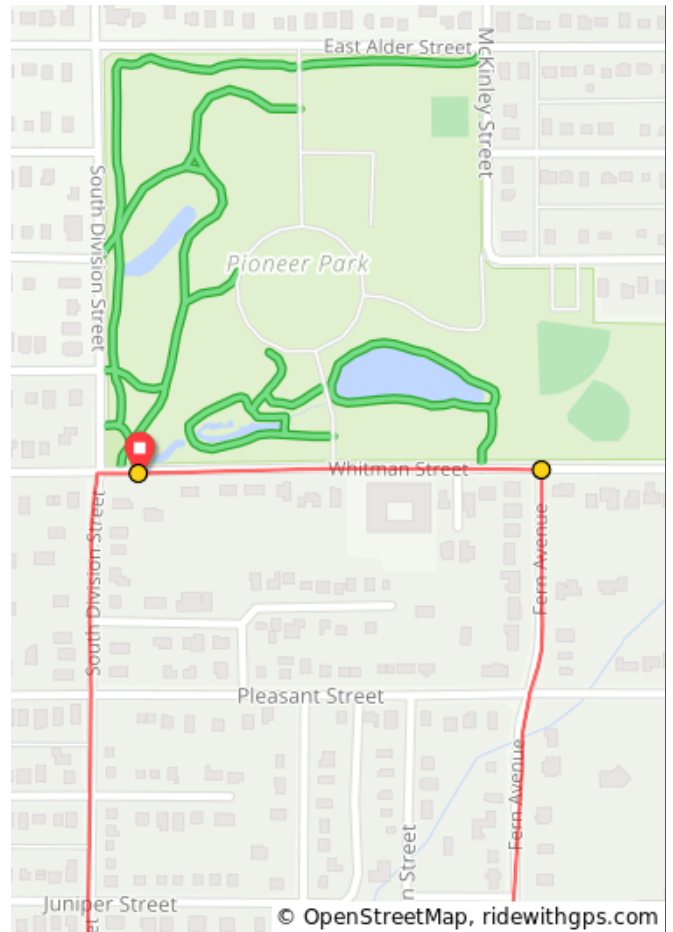


This is a beautiful ride to Harris Park, Milton-Freewater (OR).



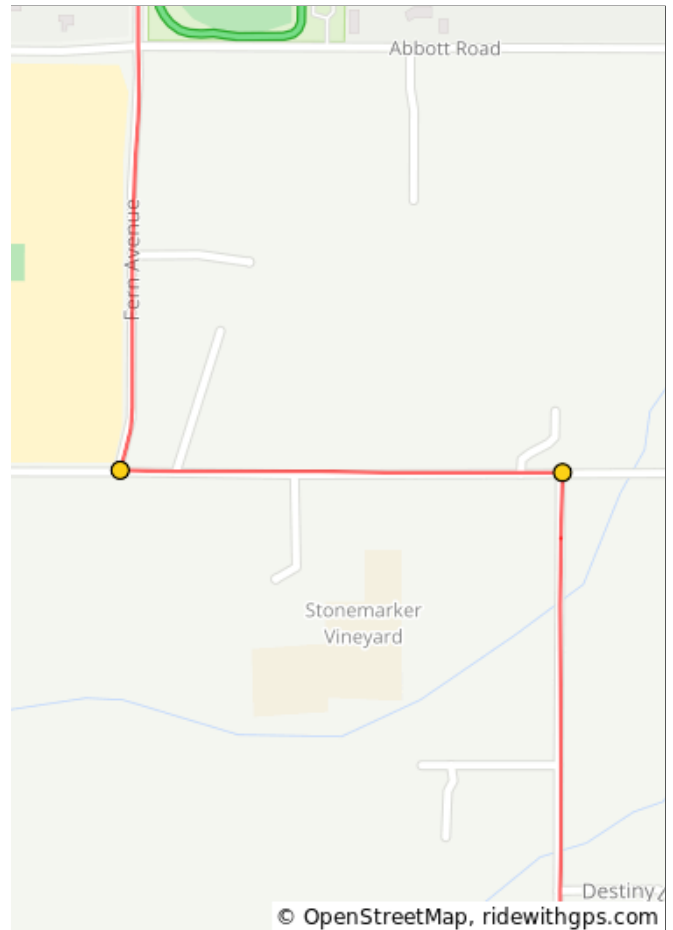
Pioneer Park - Harris Park - Pioneer Park

Num	Dist	Prev	Type	Note	Next
1.	0.0	0.0	📍	Start of route	0.2
2.	0.2	0.2	➔	R onto Fern Ave	1.5



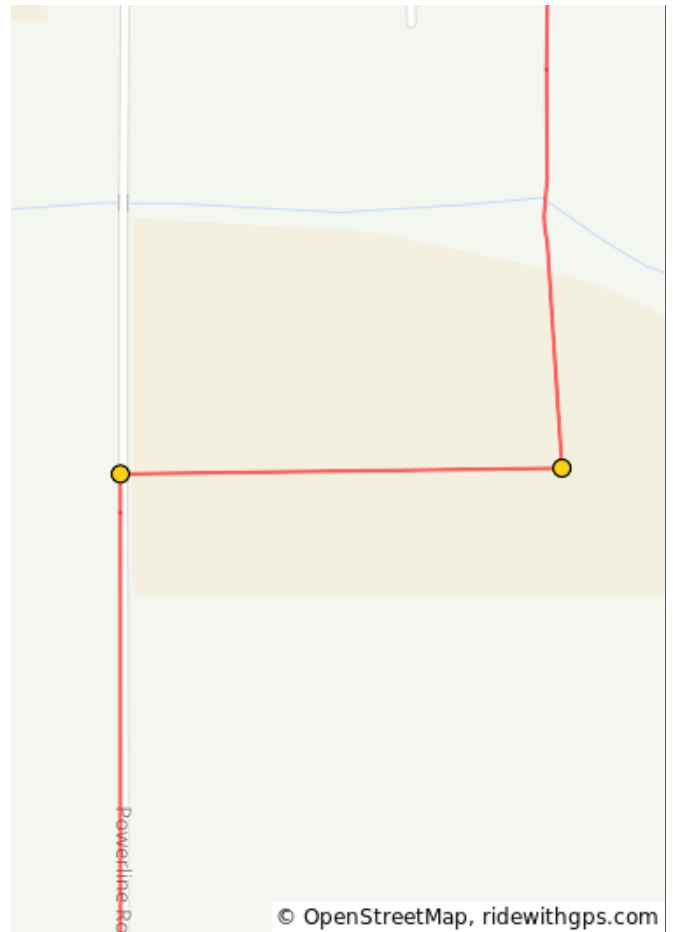
0.2 miles. +9/-0 feet

Num	Dist	Prev	Type	Note	Next
3.	1.7	1.5	➔	L onto Reser Rd	0.3
4.	2.0	0.3	➔	R onto Kendall Rd	1.8



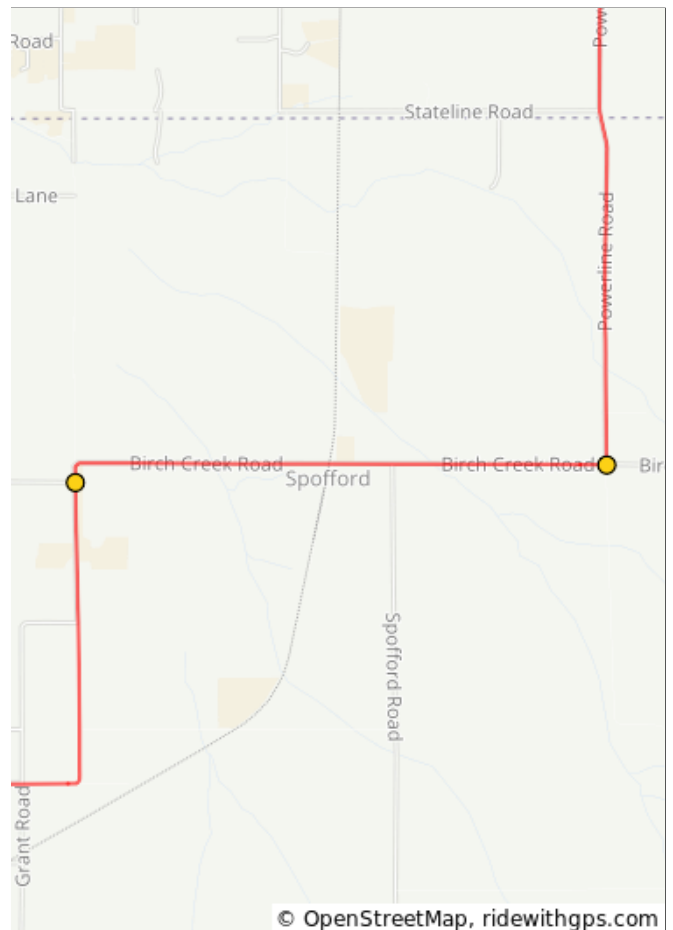
1.8 miles. +8/-0 feet

Num	Dist	Prev	Type	Note	Next
5.	3.8	1.8	→	R	0.3
6.	4.0	0.3	←	L onto Powerline Rd	2.8



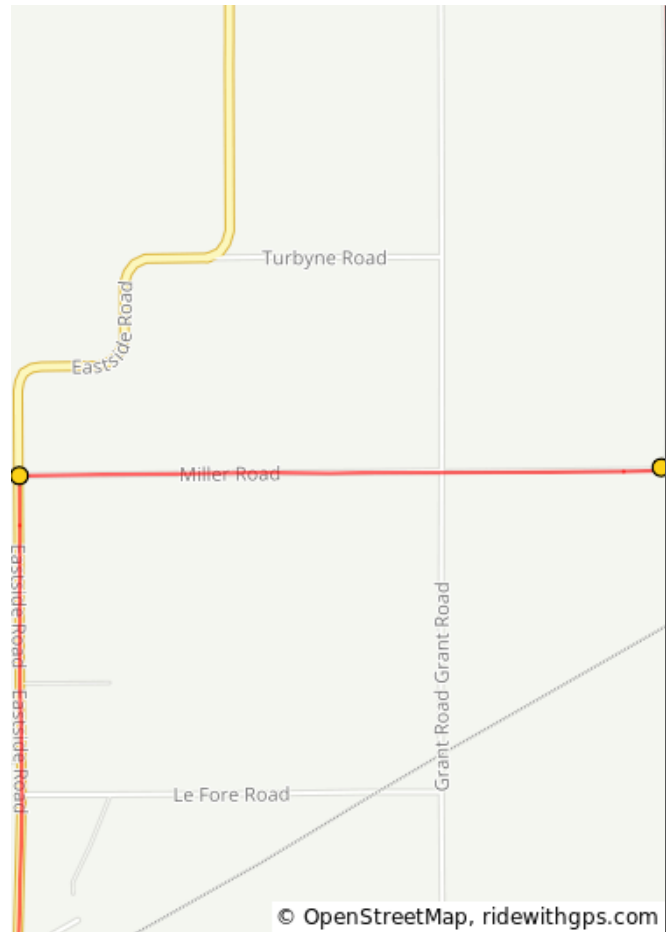
2.0 miles. +0/-23 feet

Num	Dist	Prev	Type	Note	Next
7.	6.8	2.8	→	R onto Birch Cr Rd/County 550 Rd	2.6
8.	9.4	2.6	↑	Continue onto Telephone Pole Rd	1.4



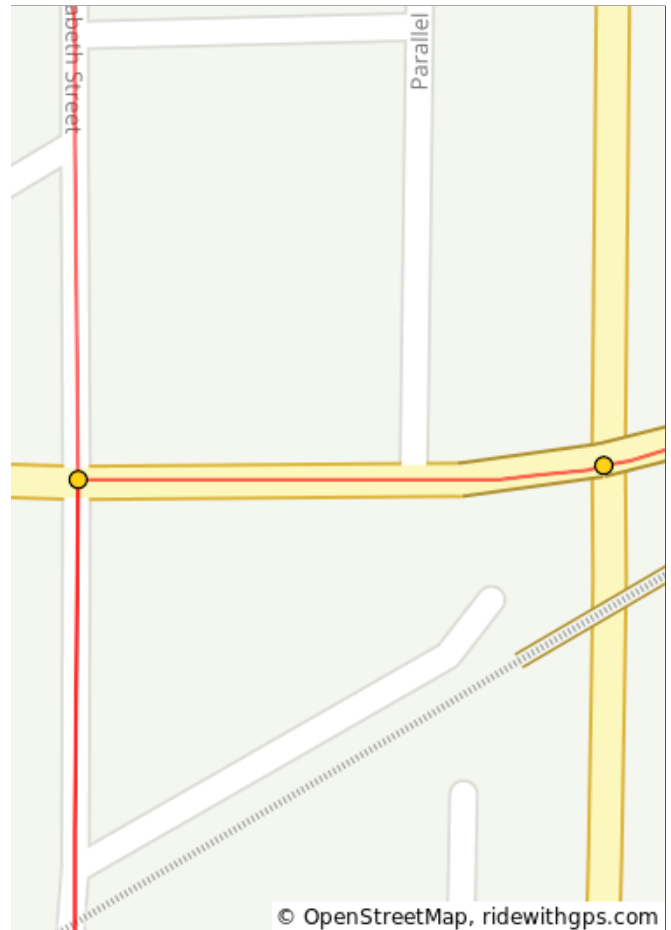
5.4 miles. +5/-202 feet

Num	Dist	Prev	Type	Note	Next
9.	10.8	1.4	↑	Continue onto Miller Rd	0.8
10.	11.6	0.8	←	L onto Eastside Rd	0.9



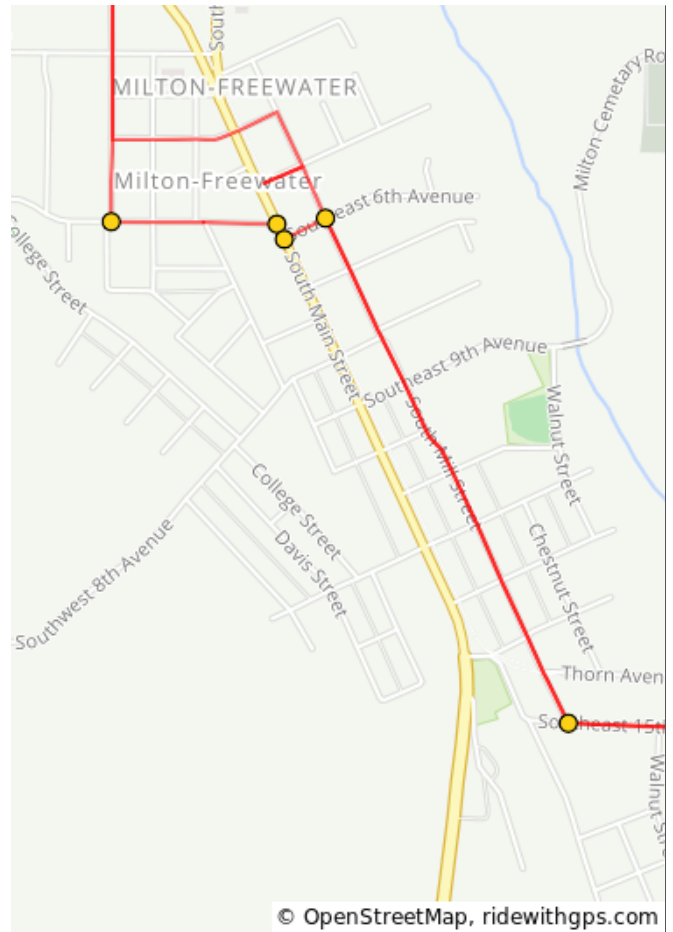
2.2 miles. +17/-9 feet

Num	Dist	Prev	Type	Note	Next
11.	12.5	0.9	↑	Continue onto NE 8th Ave	0.1
12.	12.5	0.1	←	L onto N Elizabeth St	1.0



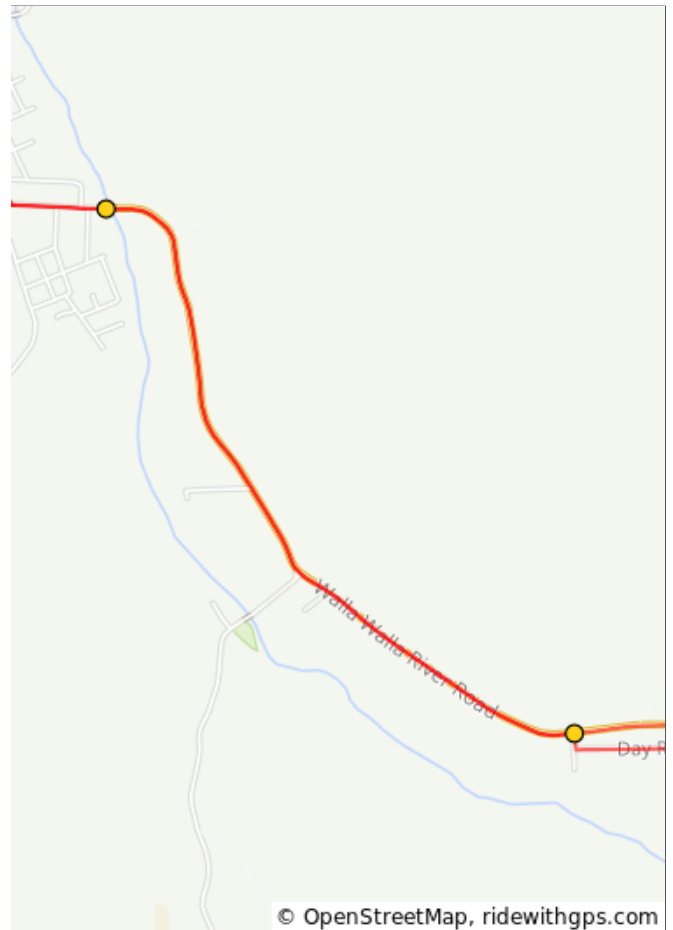
1.0 miles. +0/-0 feet

Num	Dist	Prev	Type	Note	Next
13.	13.5	1.0	←	L onto SW 6th Ave	0.2
14.	13.7	0.2	→	R onto S Main St	0.0
15.	13.7	0.0	←	L onto SE 6th Ave	0.1
16.	13.8	0.1	→	R onto S Mill St	0.7
17.	14.4	0.7	←	L onto SE 15th Ave	0.2



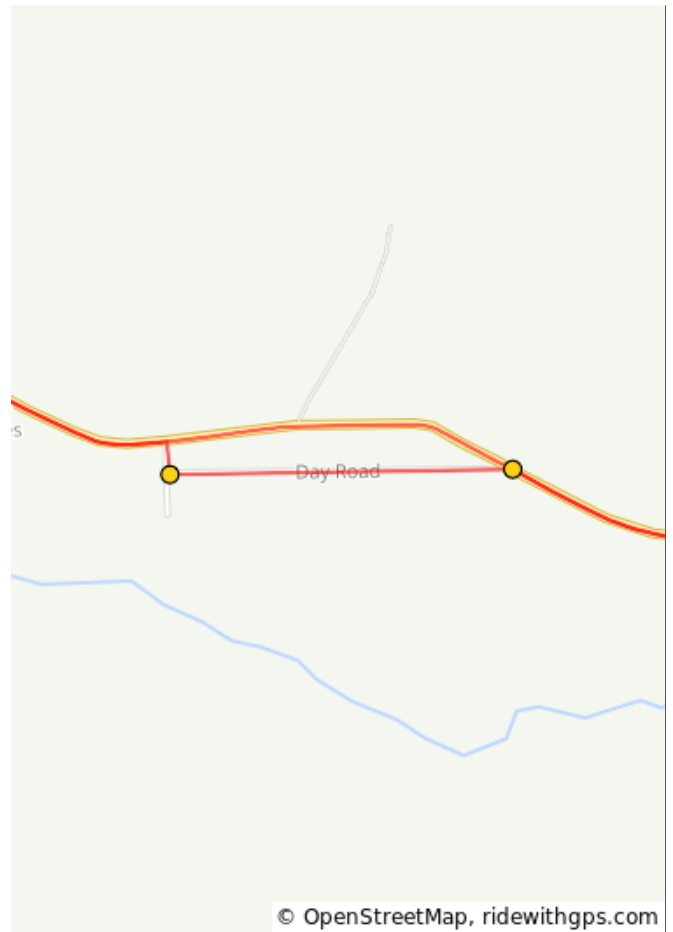
1.9 miles. +49/-0 feet

Num	Dist	Prev	Type	Note	Next
18.	14.7	0.2	↑	Continue onto Walla Walla River Rd	1.8
19.	16.5	1.8	→	R onto Day Rd	0.0



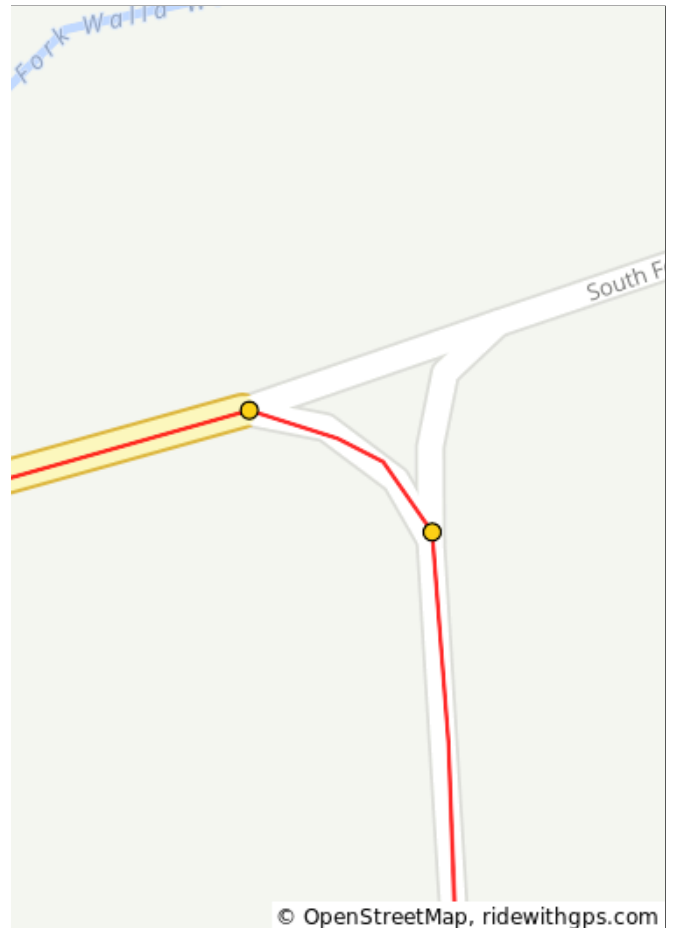
2.0 miles. +124/-7 feet

Num	Dist	Prev	Type	Note	Next
20.	16.5	0.0	←	L to stay on Day Rd	0.4
21.	16.9	0.4	↑	Continue onto Walla Walla River Rd	2.4



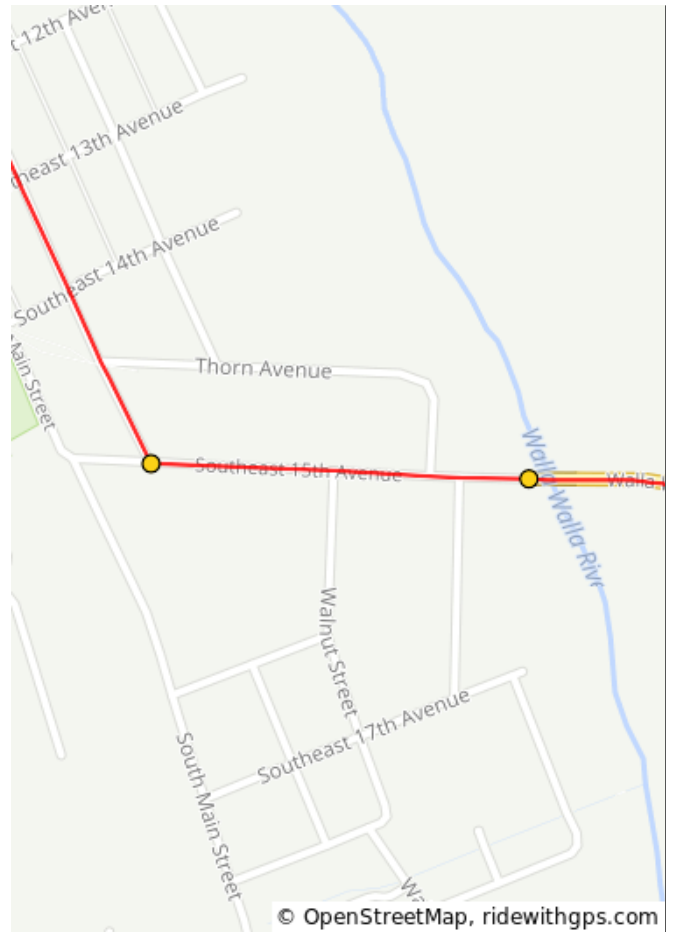
0.4 miles. +0/-0 feet

Num	Dist	Prev	Type	Note	Next
22.	19.3	2.4	→	R onto S Fork Walla Walla River Rd	15.2
23.	34.5	15.2	←	Slight L onto Walla Walla River Rd	4.6



17.6 miles. +720/-718 feet

Num	Dist	Prev	Type	Note	Next
24.	39.2	4.6	↑	Continue onto SE 15th Ave	0.2
25.	39.4	0.2	→	Turn right onto S Mill St	0.7



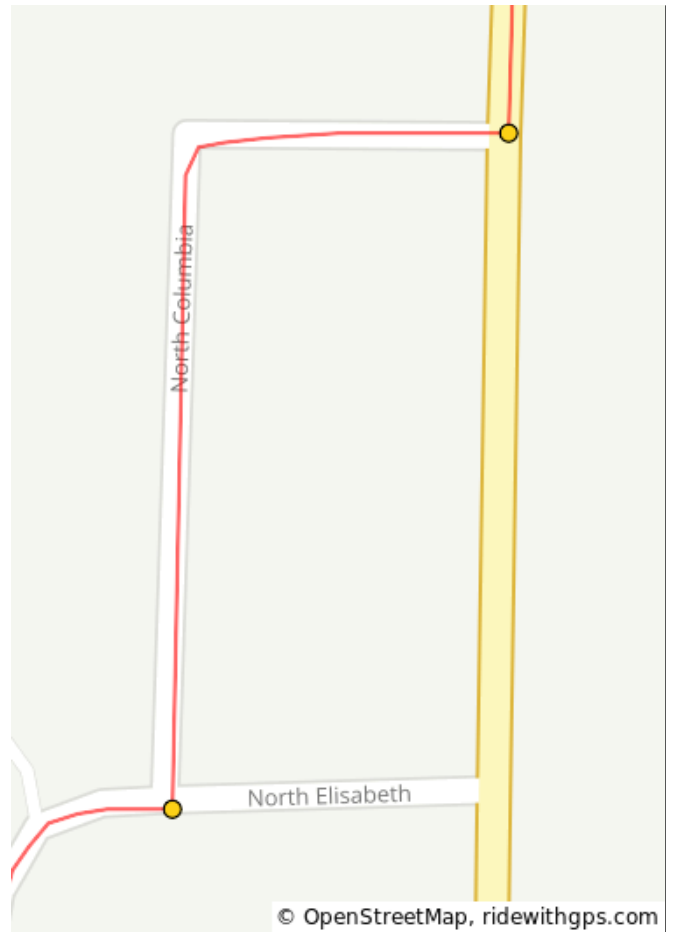
4.9 miles. +4/-1 feet

Num	Dist	Prev	Type	Note	Next
26.	40.1	0.7	←	Turn left onto SE 5th Ave	0.1
27.	40.2	0.1	←	Turn left onto S Mill St	0.1
28.	40.3	0.1	←	Turn left onto SE 4th Ave	0.2
29.	40.5	0.2	→	Turn right onto S Elizabeth St	1.4



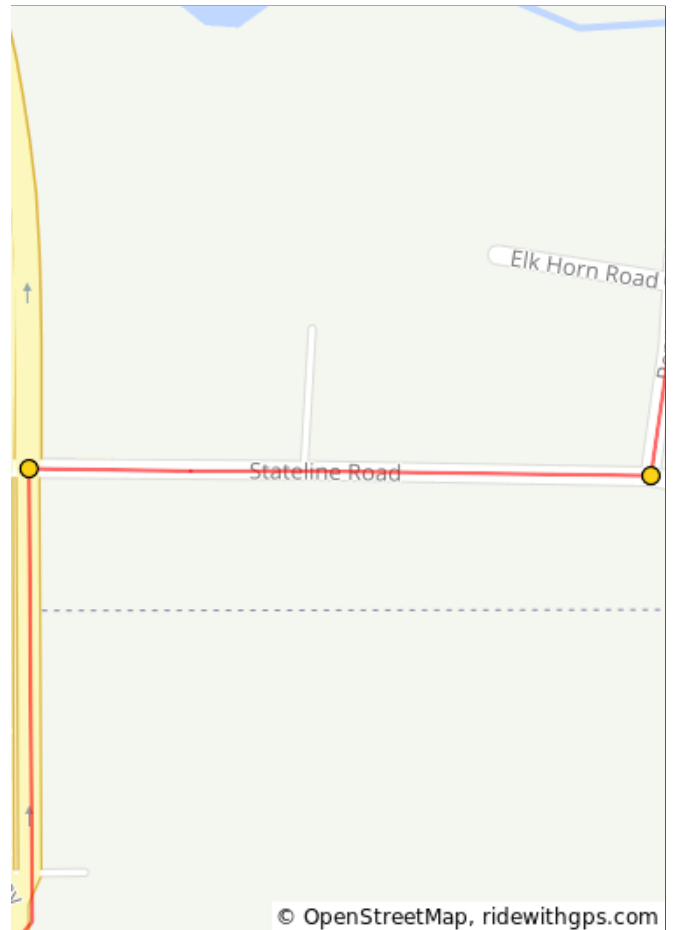
1.1 miles. +0/-5 feet

Num	Dist	Prev	Type	Note	Next
30.	41.9	1.4	←	L onto N Columbia	0.1
31.	42.0	0.1	←	L onto OR-11 N	3.3



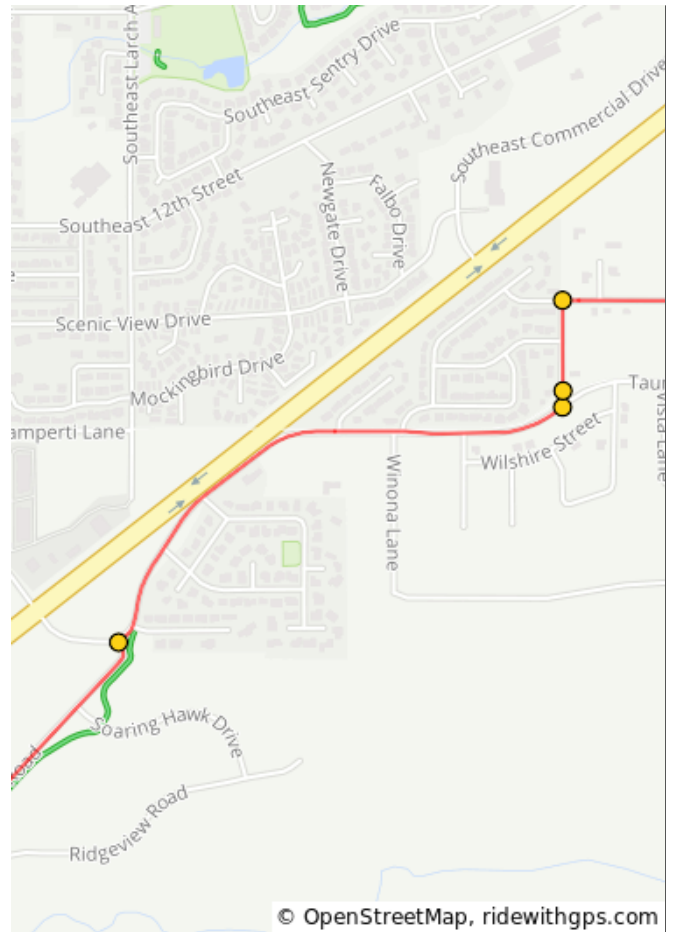
1.5 miles. +0/-0 feet

Num	Dist	Prev	Type	Note	Next
32.	45.3	3.3	→	R onto Stateline Rd	0.2
33.	45.5	0.2	←	L onto Peppers Bridge Rd	2.2



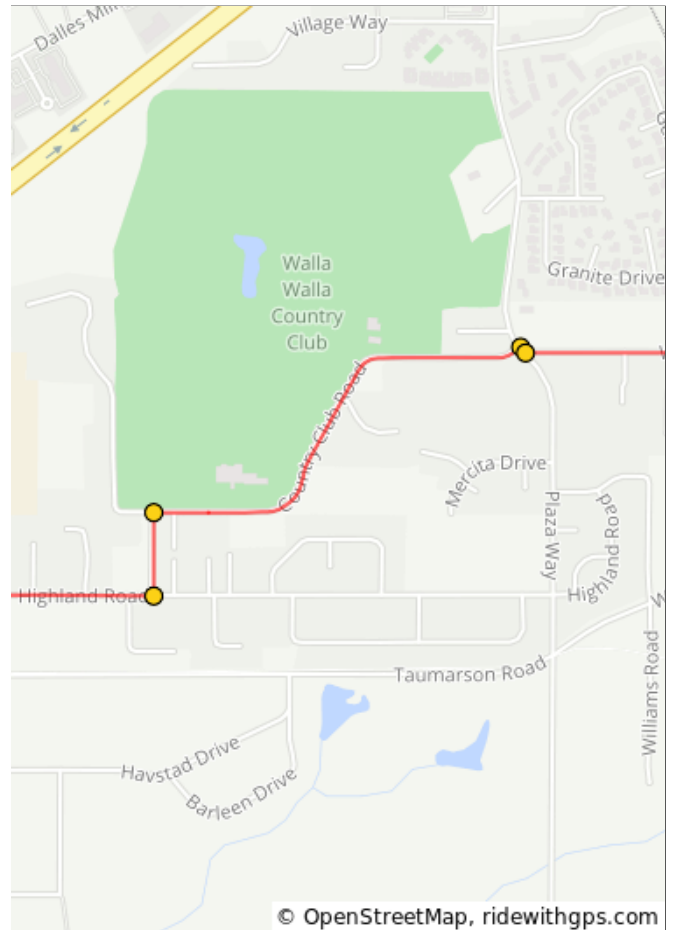
3.5 miles. +0/-24 feet

Num	Dist	Prev	Type	Note	Next
34.	47.7	2.2	→	R onto Taumarson Rd	0.7
35.	48.4	0.7	←	L onto Highland Rd	0.0
36.	48.4	0.0	↑	Continue onto SE Justice Ave	0.1
37.	48.5	0.1	→	R onto Highland Rd	0.6



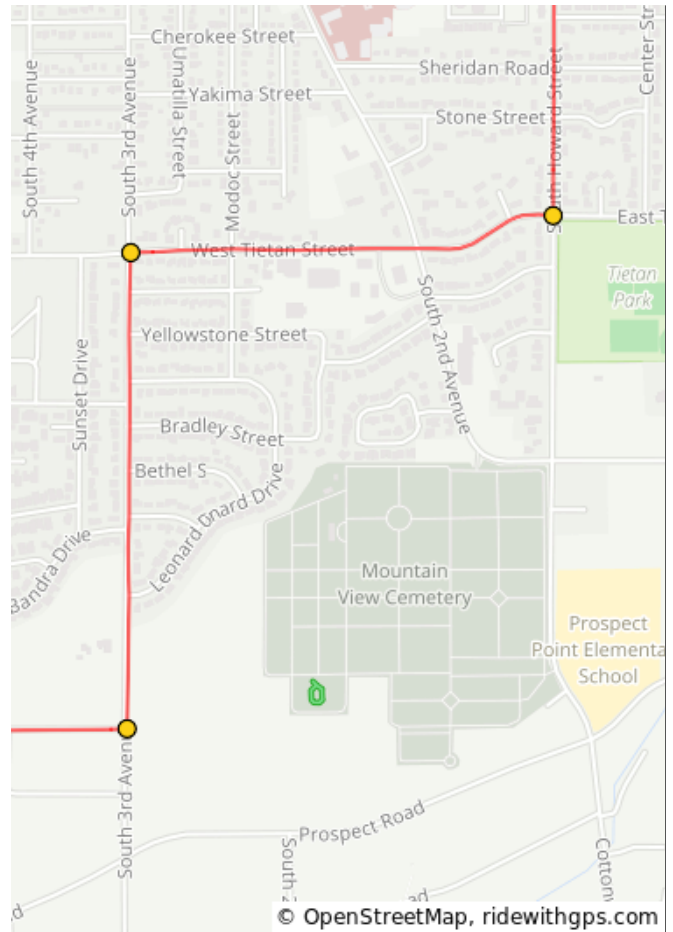
3.0 miles. +31/-0 feet

Num	Dist	Prev	Type	Note	Next
38.	49.2	0.6	←	L onto Leroux Ln	0.1
39.	49.3	0.1	→	R onto Country Club Rd	0.5
40.	49.8	0.5	→	R onto Plaza Way	0.0
41.	49.8	0.0	←	L onto Whitney Rd	0.5



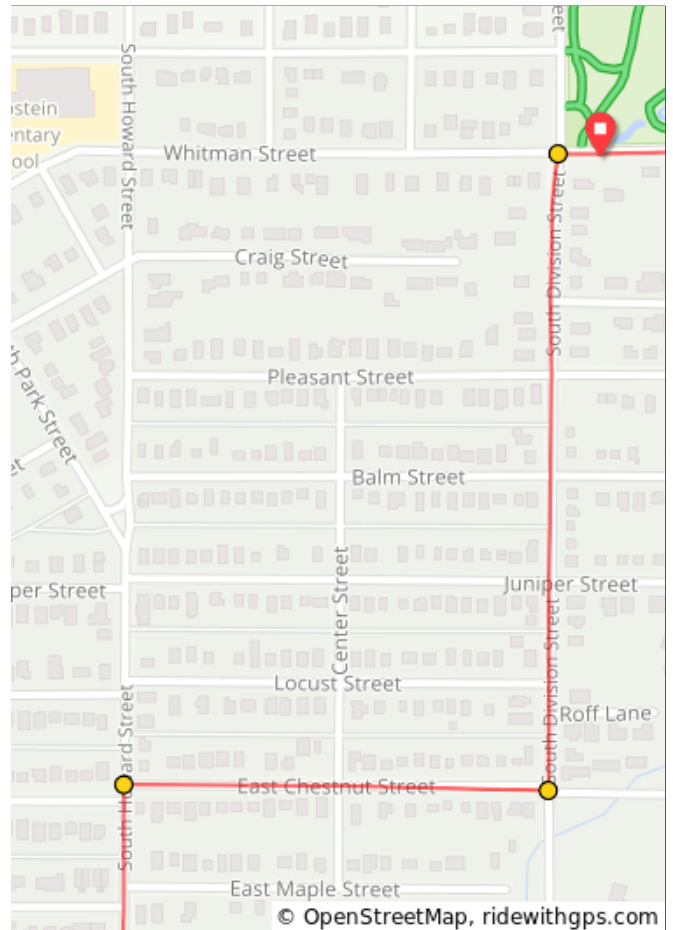
1.3 miles. +5/-6 feet

Num	Dist	Prev	Type	Note	Next
42.	50.3	0.5	←	L onto S 3rd Ave	0.6
43.	50.8	0.6	→	R onto W Tietan St	0.5
44.	51.3	0.5	←	L onto Howard St	0.6



1.5 miles. +42/-0 feet

Num	Dist	Prev	Type	Note	Next
45.	51.9	0.6	→	R onto E Chestnut St	0.2
46.	52.2	0.2	←	L onto S Division St	0.4
47.	52.6	0.4	→	R onto Whitman St	0.0



1.2 miles. +19/-0 feet