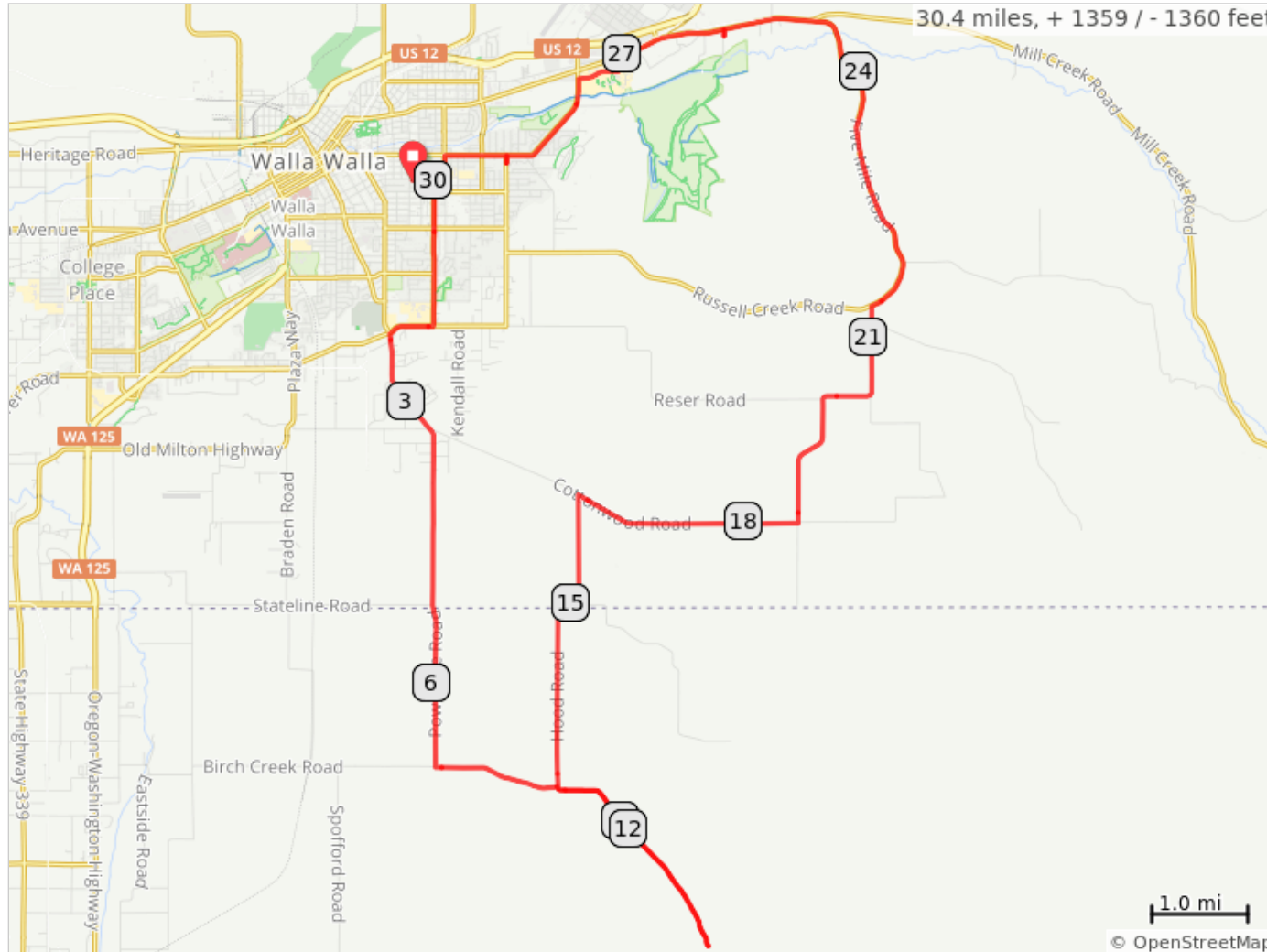
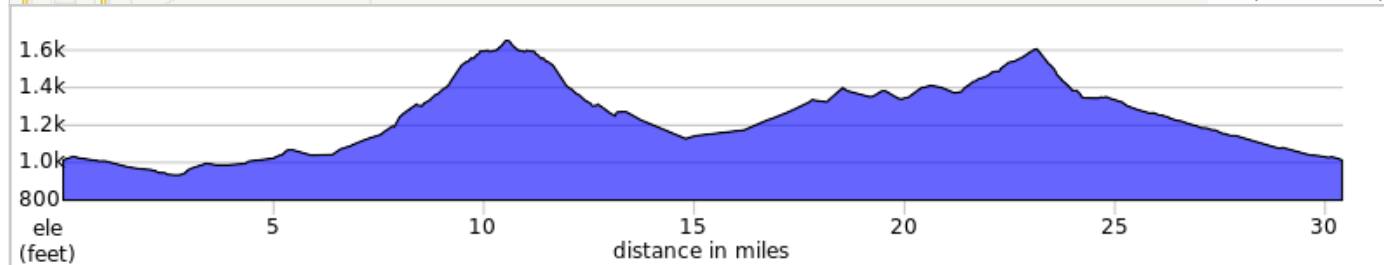


# Pioneer Park-Cottonwood-Powerline-Birch Creek to gravel-Hood-Cottonwood-Foster-5 Mile-Mill Creek-bike Path-Tausic-back to Pio...

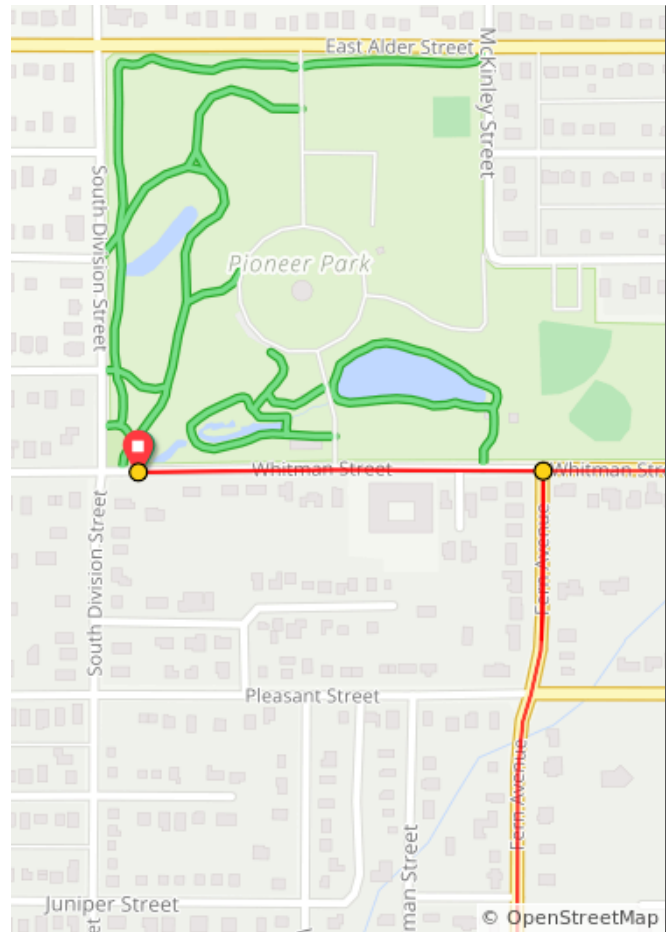


See the country side on well paved roads, some climbing with very little traffic. Stop at the top of 5 mile hill and take a picture of the valleys wheat fields with the foot of the Blue Mountains in the background.



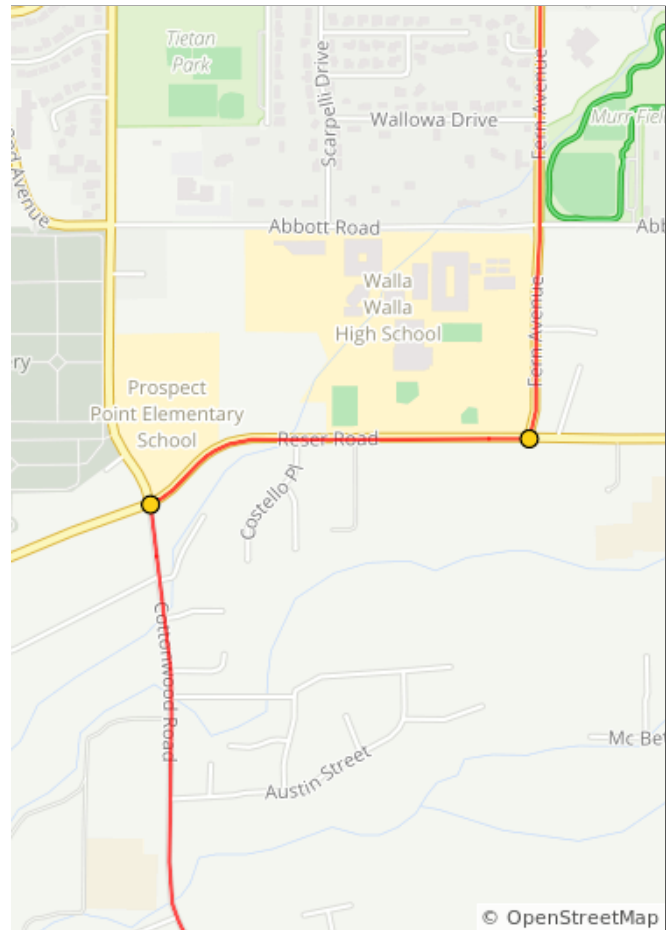
Pioneer Park-Cottonwood-Powerline-Birch Creek to gravel-Hood-Cottonwood-Foster-5 Mile-Mill Creek-bike Path-Tausic-back to Pio...

Num	Dist	Prev	Type	Note	Next
1.	0.0	0.0	📍	Start of route	0.2
2.	0.2	0.2	➔	R onto Fern Avenue	1.5



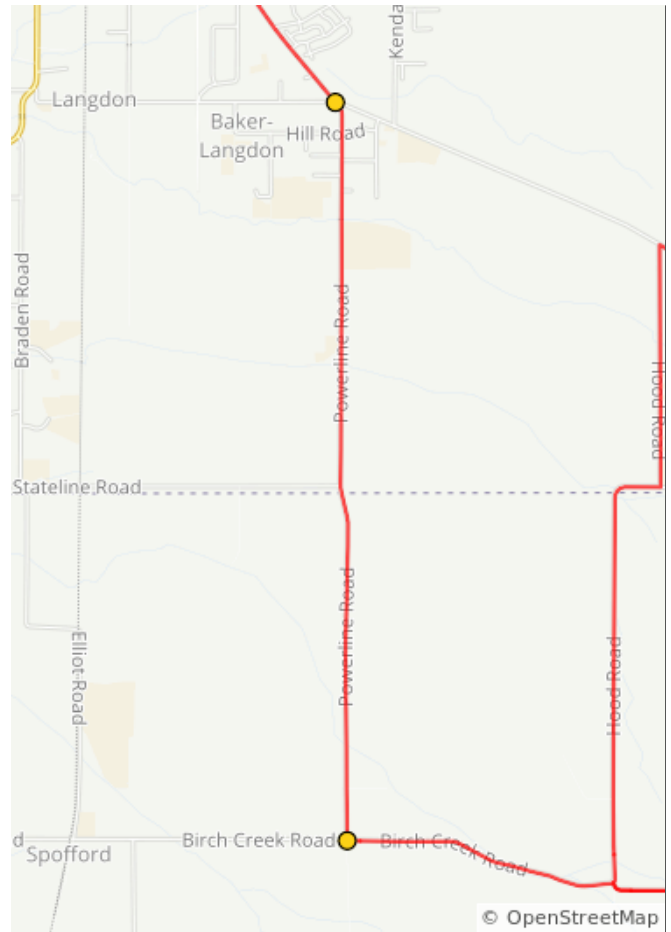
0.2 miles. +7/-0 feet

Num	Dist	Prev	Type	Note	Next
3.	1.8	1.5	➔	R onto Reser Road	0.5
4.	2.2	0.5	➔	L onto Cottonwood Road	1.1



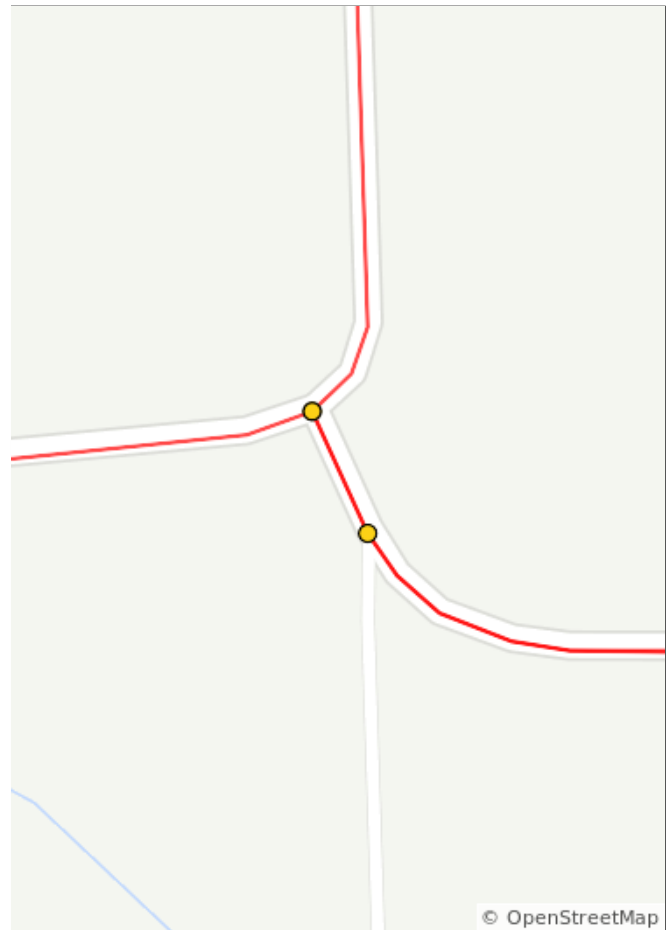
2.0 miles. +0/-16 feet

Num	Dist	Prev	Type	Note	Next
5.	3.3	1.1	↗	Keep R onto Powerline Road	3.5
6.	6.8	3.5	←	L onto Birch Creek Road	1.3



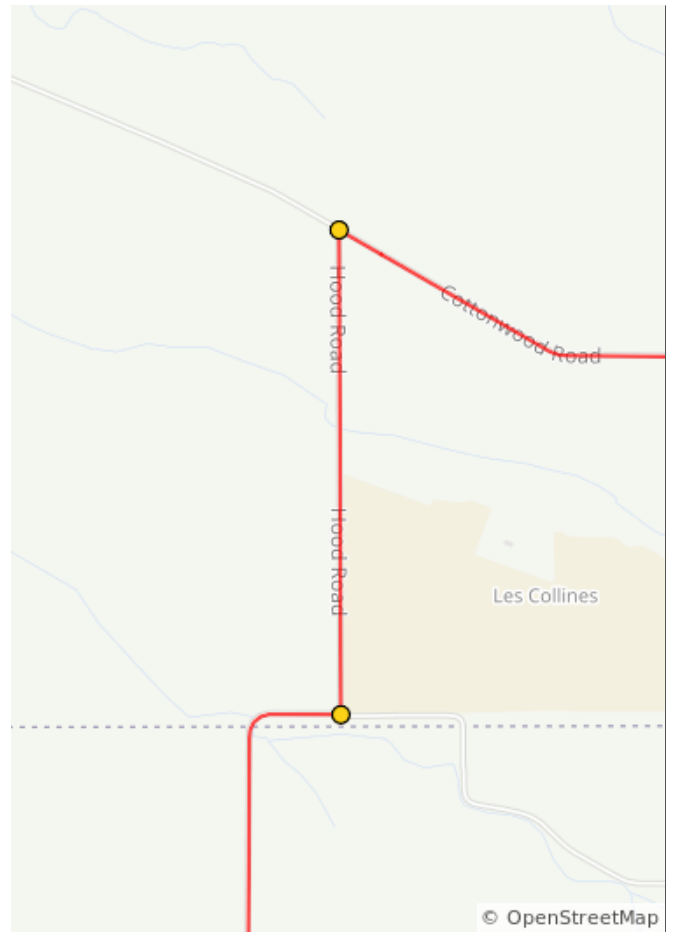
4.6 miles. +127/-33 feet

Num	Dist	Prev	Type	Note	Next
7.	8.1	1.3	→	R onto Birch Creek Road	0.0
8.	8.1	0.0	↖	Keep L onto Birch Creek Road	4.8
9.	13.0	4.8	→	R onto Hood Road	2.1



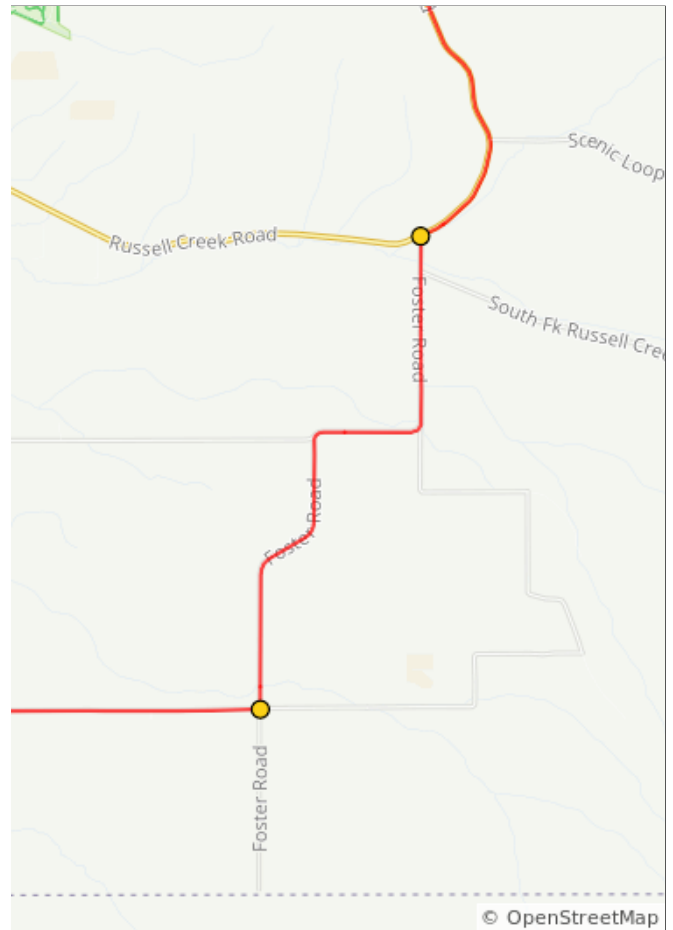
6.1 miles. +371/-378 feet

Num	Dist	Prev	Type	Note	Next
10.	15.0	2.1	←	L onto Hood Road	1.1
11.	16.2	1.1	↗	Sharp R onto Cottonwood Road	2.3



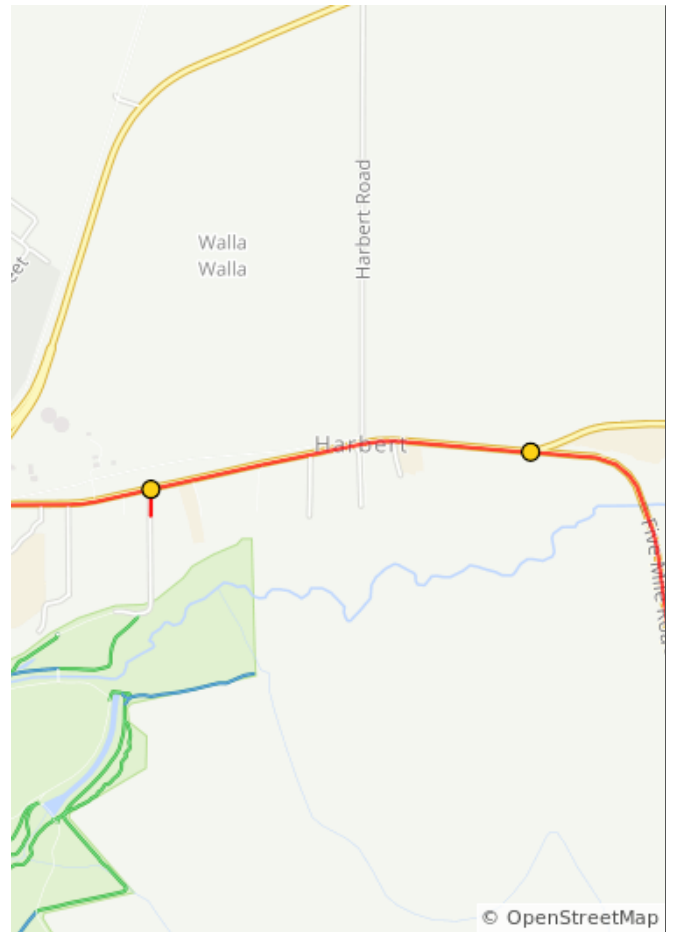
3.2 miles. +0/-0 feet

Num	Dist	Prev	Type	Note	Next
12.	18.5	2.3	←	L onto Foster Road	2.8
13.	21.4	2.8	→	R onto Russell Creek Road	3.5



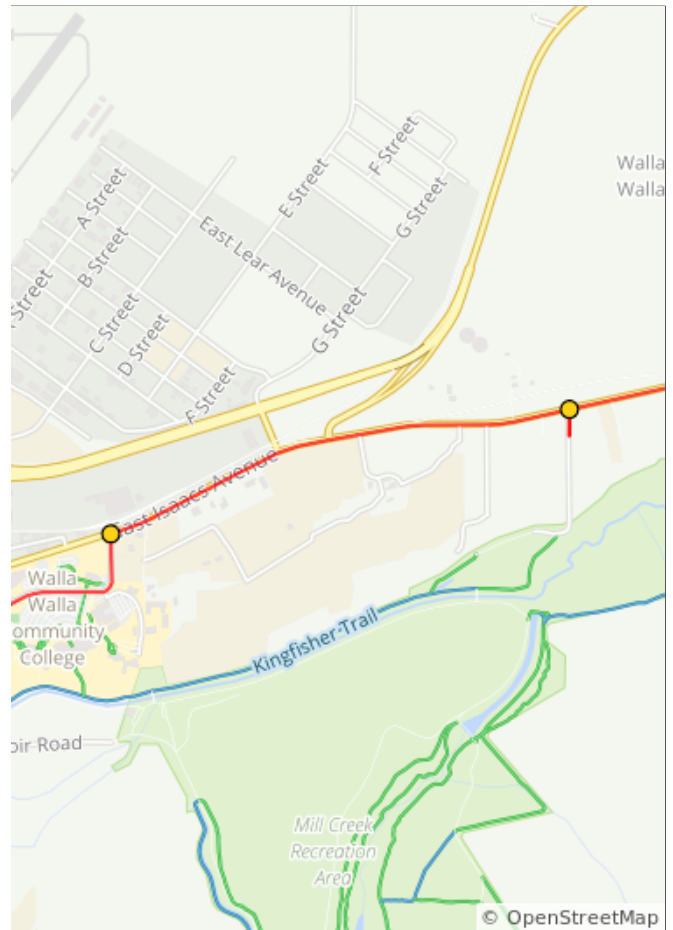
5.2 miles. +97/-99 feet

Num	Dist	Prev	Type	Note	Next
14.	24.9	3.5	↑	Continue onto Mill Creek Road	0.9
15.	25.8	0.9	←	L onto Rooks Park Road	0.1



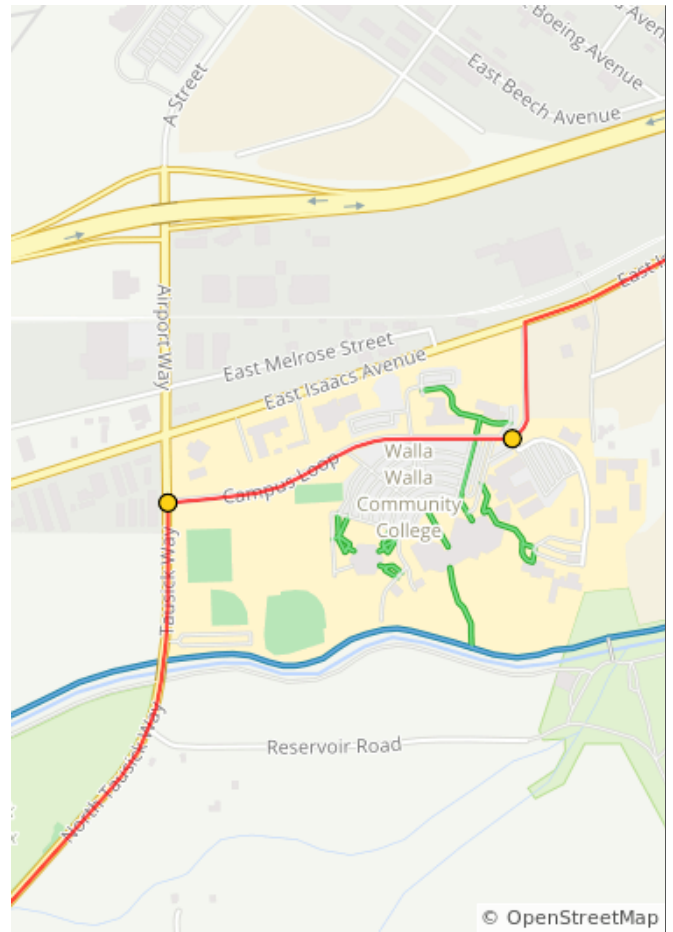
4.4 miles. +0/-72 feet

Num	Dist	Prev	Type	Note	Next
16.	25.9	0.1	←	L onto Mill Creek Road	1.1
17.	27.1	1.1	←	L onto Campus Loop	0.1



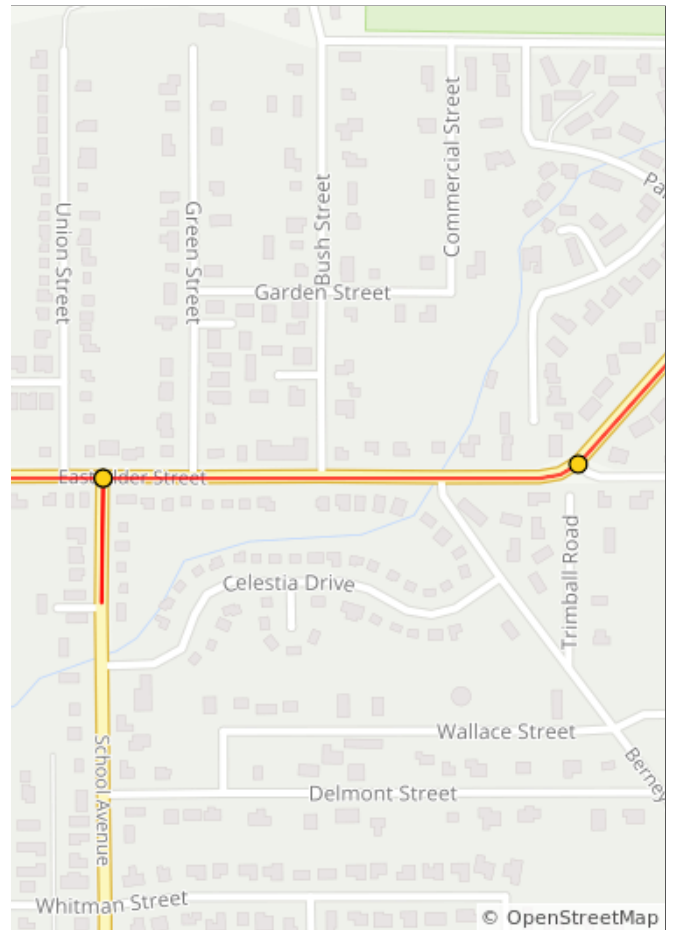
1.3 miles. +0/-67 feet

Num	Dist	Prev	Type	Note	Next
18.	27.2	0.1	↗	Slight R onto Campus Loop	0.4
19.	27.6	0.4	←	L onto Tausick Way	0.9



0.6 miles. +0/-19 feet

Num	Dist	Prev	Type	Note	Next
20.	28.6	0.9	↗	Slight R onto East Alder Street	0.3
21.	28.8	0.3	←	L onto School Avenue	0.1
22.	29.0	0.1	←	L onto East Alder Street	0.6



1.4 miles. +1/-17 feet

Num	Dist	Prev	Type	Note	Next
23.	29.6	0.6	←	L onto South Roosevelt Street	0.3
24.	30.0	0.3	←	L onto Fern Avenue	0.2
25.	30.2	0.2	←	L onto Whitman Street	0.2
26.	30.4	0.2	📍	End of route	0.0

1.4 miles. +/-21 feet

